

Hempfield Church of the Brethren



August 25, 2013
10:15 AM



- † **Welcome to HCOB!** If there is anything that we can do to make your visit here more comfortable or you have any questions please feel free to approach any member of our church family or the greeters at the welcome table in the lobby.
- † **Large print hymnals and bulletins** are available on the narthex table. Please return the hymnals to the narthex table following the service.
- † **Difficulty hearing the service?** Small earpieces are available to allow you to control the volume. Stop by the sound booth before the service to try one out!
- † **We have a special gift to give you** after the service. If somehow we miss you, please tell one of the ushers, and we will make sure you receive a gift.
- † **Nursery and child-appropriate worship and activities** are available during the 10:15 worship service.
- † **We offer two Sunday AM worship services: a traditional service at 8:00** and a **“blended” service at 10:15** with a mix of contemporary and traditional elements.
- † **Please sign the guest register** when it passes by you (your name, address & phone number, please) so that we can let you know how much we appreciate your visit with us today.

Get to know us more at
www.hempfieldcob.org

Hempfield COB Vision

*Firmly rooted and living deeply in the character of
Christ to become a healthier church that powerfully
shares Christ with the world.*



☆This Week: August 25-September 1☆

| | | |
|------------------|--------------------------------------|---|
| TODAY | 11:30 A.M. 2:00 P.M. | Membership Class Youth Cookout |
| MONDAY | 6:30 P.M. | Sr. High Cell Group |
| TUESDAY | 7:00 P.M. | Leadership Team |
| WEDNESDAY | 6:00 A.M. | Ladies Prayer Breakfast |
| SUNDAY | 8:00 A.M. 9:00 A.M. 10:15 A.M. | Traditional Service Sunday School Blended Service Pastor Pete Kontra Preaching "The End of Religion" Colossians 1:1-14 |

☆Future Dates to Keep in Mind☆

- September 2—Office Closed for Labor Day
- September 5—Prayer Experience
- September 6—WORDD Worship
- September 7—Outbreak Festival
- September 8—Church Fall Picnic
- September 9—Younger Youth Cell Group Begins
- September 15—2-Cent-A-Meal Offering
- September 18—Herald Deadline
- September 18—Connections Begins
- September 19—Ladies Bible Study Begins
- September 20 & 21—Disaster Relief Auction



Adult Summer Sunday School Series

For the summer, our Adult Sunday School classes will be combining to study the International Sunday School Lessons. The focus will be on the worshipping practices of the ancient Israelites prior to and after their Babylonian captivity.

The location of the class will be in the Choir Room opposite the Library from 9:00 to 10:00 am.

August's Theme: Worship in Jerusalem during the time of Nehemiah

- ✝ August 25—Sabbath Reforms
 - Scripture: Nehemiah 13:10-12, 15-22
 - Teacher: Doug Hinton
- ✝ September 1—God Creates
 - Scripture: Psalm 104:5-9, 24-30
 - Teacher: Galen Brumbaugh



CHURCH PICNIC!!!! SUNDAY SEPTEMBER 8th. NO SIGN UP IS NEEDED for the picnic! Just mark your calendar, and bring a pew-full of friends to experience the joy and grace of our Lord as we live it out as family here in this place! Dress casually since following 10:15 worship we will have our church picnic with barbecued chicken and all the trimmings! We will provide chicken, chips, drinks, plates, utensils and cups. **We are asking church families whose last names start with A-O to bring salad, fresh fruit or relish to serve 10 to 12 people. We are asking families with last names from P-Z to bring dessert to serve 10 to 12 people.** (No serving utensils are needed we will provide them.) Please drop off your food during early church or Sunday school so we are ready to serve after the 10:15 service. We will serve the food from the Fellowship Hall and provide seating inside and outside, weather permitting. If you plan to sit outside, you may bring chairs and blankets in case all the seating outside is taken.

OUTBREAK SNACK TABLE—Donations of cookies, cupcakes, brownies, whoopie pies, rice krispy treats and apples are needed to sell at the Snack Table on September 7. A snack sign up sheet is available in the narthex. Please bring all donated items to the church kitchen by September 6. If you have any questions, please contact Jean Caldwell at 569-0159. Thank you.

THE ADULT CHOIR SEASON IS READY TO BEGIN! We are pleased to announce that Jen Hinton and Kristin Stauffer will be sharing the responsibilities of interim choir director starting in September until December or until a permanent director can be found, whatever comes first. Planning has already begun for the season and you may pick up a schedule on the Narthex table or in the choir room. Rehearsals begin September 11 and will be every other Wednesday 7-9pm. See you there!

FRIENDSHIP COMMUNITY will be holding our 13th Annual Golf Classic on **Thursday, September 5th** at the Foxchase Golf Club in Stevens. Due to the number of new services that we will be offering this year, we are looking for a larger group of volunteers to assist us, therefore I would like to ask you to consider sharing some information about this event with your congregation. Below is more detailed information about this event.

COBYS HIKE & BIKE—SUNDAY SEPTEMBER 8

This event will be held at Lititz COB, 300 W. Orange Street, Lititz. For more than 30 years COBYS has been serving children and strengthening families in many ways. This year's goal is to raise \$100,000 through the Bike and Hike event. There is a 3 mile hike through Lititz Spring Park and community; bike and motorcycle rides travel the countryside. You are invited to participate in any of these events. You may pick up a brochure on the narthex table for more info and to register. James Wenger has been a great supporter of the bike ride for many years as well as Sunday School classes and individuals. You may donate even if you don't participate and also just come and support the hundreds who participate as they leave and return from their journey and enjoy refreshments together in the pavilion. **You can join the picnic at Hempfield Church and also participate in the Bike & Hike which are the same day.**

DISASTER RELIEF TRIP--The Atlantic Northeast District is planning a disaster relief trip for September 1-7 to Schohrie NY. This area was devastated after heavy flooding from Hurricane Irene in 2011 and is still in need of help. If you would be interested in participating in this trip please contact Dave Root at 629-1624 ASAP. Or contact the District Disaster Coordinator, Bob Eisemann at 733-7413.

FOOD BANK NEEDS FOR JULY & AUGUST: Spam, Rice, Cereal, Peanut butter, Canned fruit, Canned pasta, Boxed potatoes, Baked beans, Spaghetti sauce, Spaghetti noodles. Please put items in the coatroom and they will be taken to the food bank. Thank you!

HCOB YOUTH NEWS

- ★ **Combined Sr./Jr. High Cook-out:** TODAY from 2-6 at Molly's! 1718 Long Level Road, Wrightsville. Come to celebrate the last day of summer and the kick-off of another great year of cell groups! As always, bring a friend! Also, please bring a drink, snack, or dessert item for the group (See Hempfield Youth Facebook page for sign-up) and message Molly Snavelly or Doug Hinton with questions (989-0142)
- ★ **Reminder: Sr. High Cell** will return to Mondays, beginning Aug. 26th. Join us at the Hintons (1660 Stevens St. East Pete) from 6:30-8 on your 1st day "back!" Praying for you as you begin your new schedule (and let's remember to keep our seniors headed to college in prayer too!!)
- ★ **Younger Youth Cell Group** returns on Monday, September 9th at the Witmer's home from 6:45-8:45 PM.
- ★ **NYC Hangout: Pizza and Fun with the Coordinators!** September 8 @ 7:00 pm, Elizabethtown Church of the Brethren—Come out and meet the 2014 National Youth Conference Coordinators to learn more about NYC, enjoy food and fellowship, and get excited for next summer! Youth and advisors are welcome! Visit www.brethren.org/NYC for more information about NYC.

☆Today's Worship Service☆

TIME OF REFLECTION

What gaps exist between what you say you believe about Jesus Christ and what you actually do? Why is that?

PRELUDES

| | |
|------------------------|----------------------|
| Song Without Words | Charles Demorest |
| Faith, Hope and Love | arr. by E. J. Lorenz |
| My Heart Ever Faithful | J. S. Bach |

WELCOME & ANNOUNCEMENTS

CALL TO WORSHIP Psalm 4

OPENING PRAYER

*HYMN Ask Ye What Great Thing I Know 337

CHILD DEDICATION Gavin Carter Splain

PRAYER FOR FAITH GETAHUN'S SEMESTER ABROAD

*GIVING OUR PRAISE TO GOD Praise Band
Power in the Blood
Let the River Flow
How Great Is Our God

CHRIST LIVING THROUGH US

My Brother's Keeper—Christmas Shoeboxes Jean Barger

OFFERING OUR GIFTS TO GOD

Offertory Thought
Offertory—Solice Nordman/Koschatt
(Please sign the attendance book during the offertory)

SCRIPTURE John 18:15-18; 25-27

SPECIAL MUSIC Diane Garber

MORNING PRAYER

Please include the following people in your prayers:
Chhrey Chea, Jayne Hutchison, Ruth Johnson & Family, John Kreider,
Family of Landis Kreider, Sarah Landis

SCRIPTURE Philippians 2:1-5

MESSAGE What Do *You* Believe? (John 14:1-14)

*HYMN I Believe in You, Lord Jesus 446

*BENEDICTION

*POSTLUDE A Mighty Fortress Mendelssohn / Lorenz

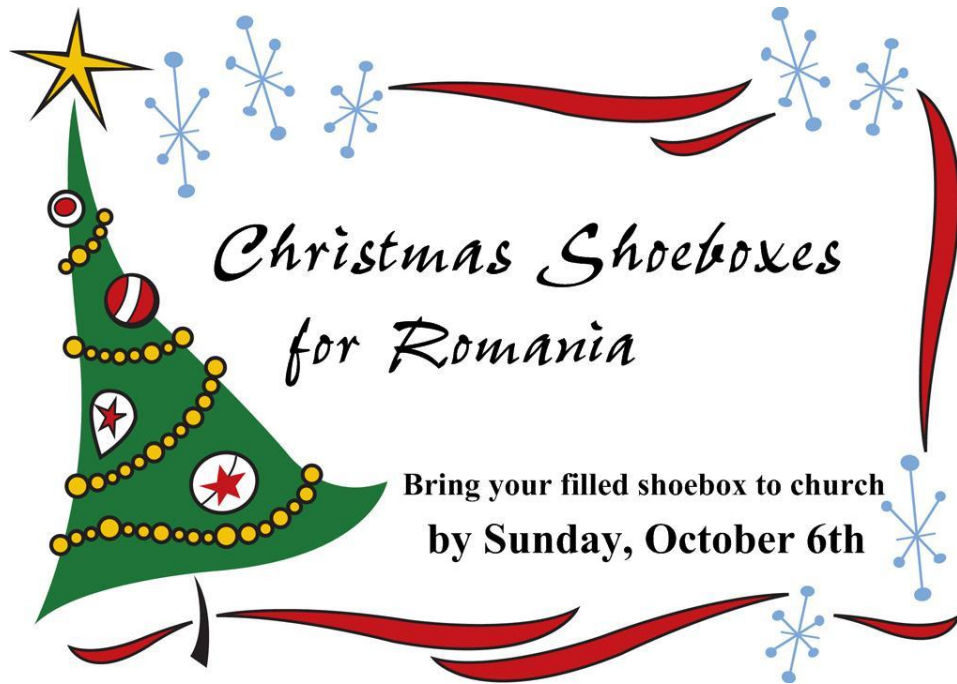
**Those who are able are invited to stand.*

Organist/Pianist—June Lykens Lantz
Preacher—Pastor Geoff Davis
Sound Techs—Rich Bushong, Matt Markey
Video Tech—Alex Troxell
Praise Band Leader—Shelley Kontra
Worship Leader—Jamie Bushong

WE ARE GRATEFUL FOR B. J. HAVERSTICK, one of our many talented keyboardists, at the grand piano this morning!

PASTORS PETE AND KENT WILL BE LEADING A MEMBERSHIP CLASS TODAY immediately following worship. A light lunch will be provided. Anyone who is considering taking the step into membership is welcome to attend. Don't be scared! This is simply conversation about our faith and who we are as Hempfield Church of the Brethren and what it means to be a part of Christ's Body here. Please contact Pastors Pete or Kent if you are interested or have questions. Or just show up!

J.C. WINE WILL BE 99 ON SEPTEMBER 11, 2013! If you would like to send him a birthday card, please send it to Timbercrest, P.O. Box 501, North Manchester, IN 46962. Hearing from friends and church family would be an encouragement to him, since he misses everyone so much.



Christmas Shoeboxes for Romania

Bring your filled shoebox to church
by Sunday, October 6th

Suggested Items

- ♥ **Clothing:** hats, gloves, scarves, socks, t-shirts, flannel wear
- ♥ **Hygiene Items:** toothbrush (in package), toothpaste, soap, comb, washcloth
- ♥ **Toys:** Small cars, dolls, stuffed animals, puzzles, games, yo-yos, drawing supplies
- ♥ **School Supplies:** pencils, erasers, sharpeners, tablets, calculators
- ♥ **Other:** watches, picture books, candy, stickers
- ♥ **Personal Touch:** personal or family picture with a little note

Instructions

- ♥ Fill regular size shoebox with up to 3.5 lbs of suggested items
- ♥ Wrap with love and gift paper
- ♥ Mark for boy or girl and age range on outside of box
- ♥ **Include \$6/box for shipping—please place on the outside**
- ♥ Bring to church by Sunday, October 6th and we'll take care of the rest!

In cooperation with the ministry of "My Brother's Keeper"

☆Contact the Church Office☆

Amy Smith - *Administrator*

Phone: 898-0181; E-mail: office@hempfieldcob.org
Office Hours: Monday-Friday 9:00 A.M. to 2:00 P.M.

☆Contact Church Staff☆

Our pastors are here to help when you need them. Please feel free to contact them at the phone numbers below if you have an emergency need.

Pete Kontra – *Senior Pastor*

Cell: 224-1917; E-mail: pete@hempfieldcob.org
Scheduled Day Off: Friday

Kent Rice – *Pastor for Special Ministries*

Cell: 723-6197; E-mail: kent@hempfieldcob.org
Scheduled Day Off: Monday

Geoff Davis – *Associate Pastor*

Home: 569-6284; E-mail: geoffdtuba@verizon.net

Karen Rice – *Children's Ministry Coordinator*

Cell: 413-1137; E-mail: karen@hempfieldcob.org

☆ Bulletin Deadline☆

All bulletin information must be in to the church office by Wednesday noon.

☆HCOB Family Facts☆

Attendance for August 18, 2013

Sunday School: 52 Traditional Service: 47 Blended Service: 158

Giving for August 18, 2013

General Offering: \$10,015 Building Fund Year-To-Date: \$1,555
Amount needed weekly to meet budget = \$10,069